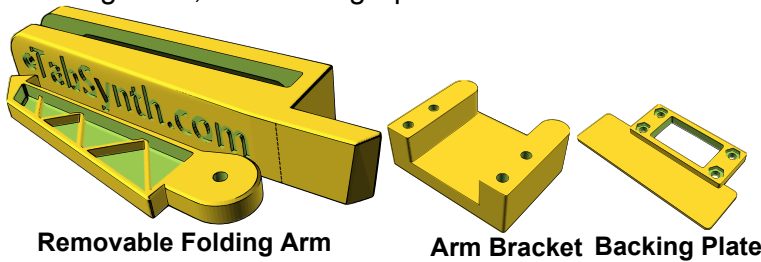


Optional Spool Arm Upgrade

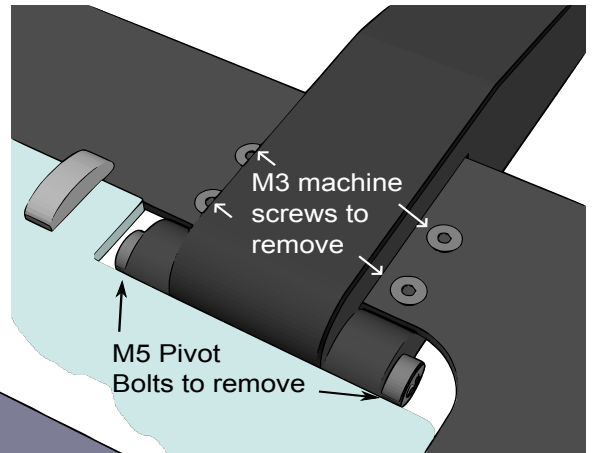
Step 20: Download and Print the new Arm Bracket, 'Backing Plate, and Folding Spool Arm.



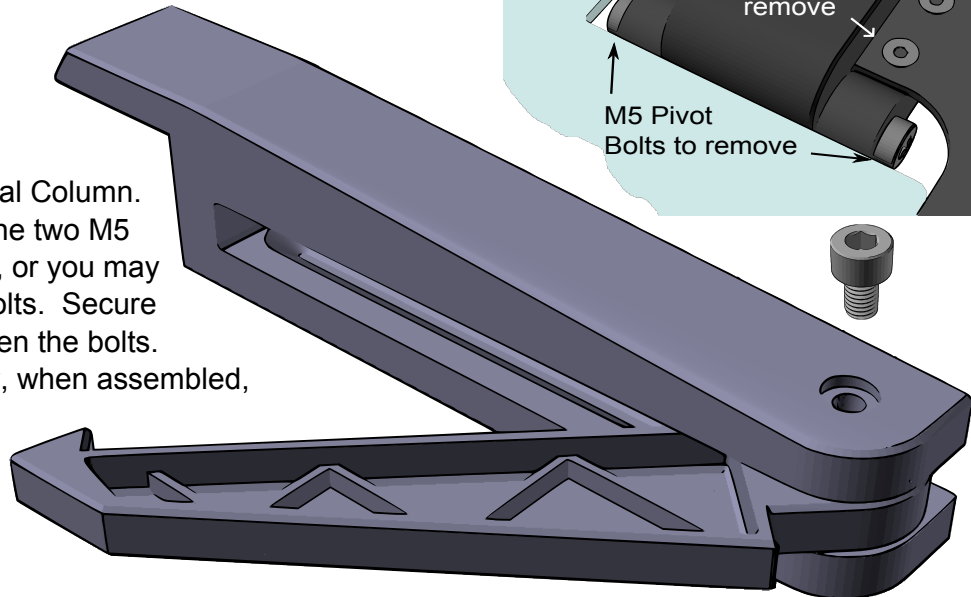
Available at:

<https://www.tabsynth.com/lulzbot-mini-spool-arm-upgrade/>

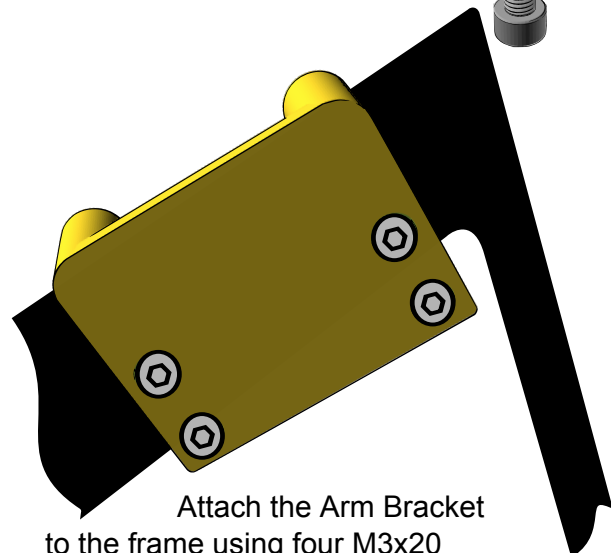
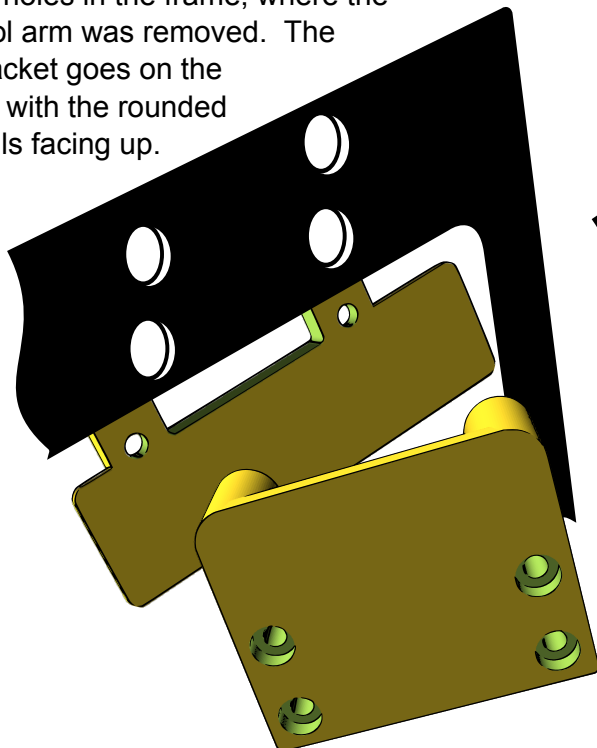
Step 21: Remove the original spool arm from the frame using a 2mm Hex wrench to take out the four M3 flathead machine screws holding it to the frame. Next separate the hinge from the arm using a 3mm Hex wrench to take out the two M5 Pivot Bolts.



Step 22: Mount the Spool Support Arm into the Vertical Column. Align the holes and insert the two M5 Pivotbolts from the old arm, or you may purchase two M5x15mm bolts. Secure the arm but don't over-tighten the bolts. The arm should pivot freely, when assembled,



Step 23: Attach the Arm Bracket and Backing Plate to the printer frame. The backing plate goes to the inside of the frame and should be aligned with the four holes in the frame, where the old spool arm was removed. The Arm Bracket goes on the outside, with the rounded side walls facing up.



Step 24: Insert the removable folding spool arm into the bracket from the top, fully seating it, with the spool support arm pointing towards the front of the printer when folded out.